

**FLOWTRON®**

# MOSQUITO

MT-250

# POWERTRAP™

**Kills Mosquitoes and Biting Flies**

Recommended for areas up to **3/4** acre



**the Ultimate Solution**



**NEW**  
**HI-TECH**  
INSECT TERMINATOR

**GENERATES HEAT,  
MOISTURE AND  
CARBON DIOXIDE**

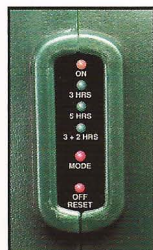
the most irresistible attractants for

**Mosquitoes  
No-See-Ums  
Black Flies  
Biting Midges**

Pat. Nos. 6,145,243 & 6,286,249  
Other Patents Pending

## **POWERFUL VACUUM**

Draws biting insects into a removable catch tray where they dehydrate and die for safe, clean and easy disposal



## **CONTROL PANEL** "Set and Forget".

Select from four individual time settings. Micro-processor automatically controls all operating functions.



## **OCTENOL LURE INCLUDED**

Time release cartridge adds **octenol** scent to the carbon dioxide emission for optimum effectiveness

# Model MT-250 Specifications

## Platinum Catalyst

Converts propane gas and air into heat, moisture and carbon dioxide.

## Powerful Vacuum

Draws mosquitoes and biting flies into the trap.

## Control Panel

Four computerized individual time settings.

## Propane Hose and Regulator

Connects to a 20 lb. tank. (tank not included)



## Micro-Processor

Programmed to automatically control all operating functions.

## Time Release Cartridge

Releases Octenol scent into the carbon dioxide emission. **FREE** individual cartridge included in carton

## Attractant Outlet

Emits heat, moisture and carbon dioxide to attract mosquitoes and biting flies.

## See-through Catch Tray

Removable for clean, easy disposal of dead insects.

## Power Cord Connector

Power pack with 50' low voltage wire included in carton

## Tank Stand

Includes post, stand, tank wrap and tank cap

**Unit Size:** 14"L x 10"W x 14"H

**Carton Size:** 15"L x 15"W x 20"H

**Shipping Wt:** 18 lbs.

**Shipping Cube:** 2.6 cu. ft.

**Electrical:** UL and CUL Listed **Power Pack:**  
Input: 120 volts AC; 60 Hz; 20 watts  
Output: 12 volts AC; 60 Hz; 1.5A  
(50' low voltage wiring included)

## Four Operating Modes:

1. 24/7: On 24 hours, 7 days
2. 3 hr: (on at dusk, off 3 hours later)
3. 3+2 hr: (on at dusk, off 3 hours later; on again at dawn, off 2 hours later)
4. 4+3 hr: (on at dusk, off 4 hours later; on again at dawn, off 3 hours later)

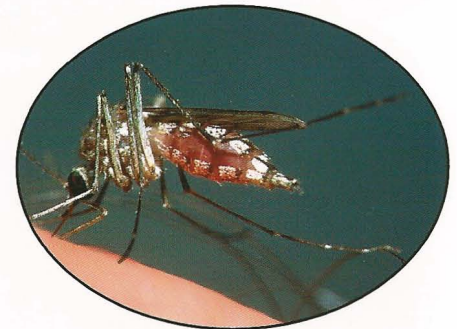
**Range:** Effective up to 3/4 acre

## PowerTrap™ Features

- ✓ Kills mosquitoes and biting flies without the use of insecticides, fogs or sprays.
- ✓ Helps reduce the spread of infectious diseases carried by mosquitoes and biting flies.
- ✓ Reduces the annoyance and discomfort level caused by biting insects.
- ✓ Targets only biting mosquitoes and biting flies, and does not attract beneficial insects.
- ✓ Fast, clean and easy insect disposal system.
- ✓ Safe, low voltage wiring for above or below ground installation.
- ✓ One year limited warranty.

## How the PowerTrap™ Works

- ✓ Heat, moisture and carbon dioxide, the acknowledged leading attractants for mosquitoes and biting flies are generated from propane gas and air.
- ✓ Unique Octenol cartridge releases a special scent which combined with carbon dioxide creates an irresistible attraction for mosquitoes and biting flies.
- ✓ Powerful vacuum draws biting insects into a convenient, removable catch tray where they quickly dehydrate and die.
- ✓ Exclusive catalytic converter uses a platinum catalyst which is safe, **flameless** and never needs replacing.
- ✓ Operates directly from any refillable 20 lb. propane tank. (as used on gas grills).



**HELPS PROTECT AGAINST INFECTIOUS DISEASES CARRIED BY MOSQUITOES AND BITING FLIES**

## Accessories



### Mosquito Attractant – MA-1000

Slow release cartridge contains 1660 mg of octenol attractant. Makes your Mosquito PowerTrap more effective in attracting mosquitoes and biting flies.



### Extension Cord – EC-50

50 foot low voltage extension cord. Allows placement of the Mosquito PowerTrap an additional 50 feet away from the power source.